



REPUBLIC OF KENYA
MINISTRY OF ENVIRONMENT, CLIMATE CHANGE AND FORESTRY
KENYA METEOROLOGICAL DEPARTMENT

Dagoretti Corner, Ngong Road, P. O. Box 30259, 00100 GPO, Nairobi, Kenya
Telephone: 254 (0) 20 3867880-7, **Fax:** 254 (0) 20 3876955/3877373/3867888,
E-mail: director@meteo.go.ke, info@meteo.go.ke; **Website:** <http://www.meteo.go.ke>
Biometeorological Services Division

WEEKLY BIOMETEOROLOGICAL BULLETIN (31ST OCTOBER –6TH NOVEMBER, 2023)

Ref No: KMD/MM/10-2023

Issue Date: 30/10/2023

1.0 PREAMBLE

Biometeorology is an interdisciplinary science of interactions between atmospheric processes and living organisms - plants, animals and human-beings. The Biometeorological Services Division collects, analyzes and interprets Meteorological and Health data in liaison with partners in the Health Sector for advisory development.

The weather information provided is aimed at guiding residents to identify and recognize the likelihood of occurrence of weather related health diseases according to the issued advisories and take necessary action.

Summary

Heavy rainfall can cause flooding and water contamination, leading to the water-borne diseases such as cholera and typhoid fever. Mosquitoes and other insects that carry diseases such as dengue fever, malaria and Zika virus thrive in warm and humid conditions, which can be created by heavy rainfall. Rain can lead to increase in respiratory illnesses and pneumonia due to dampness and mold growth.

REVIEW FOR LAST WEEK (23RD OCTOBER – 29TH OCTOBER, 2023)

1.1 High Rainfall

This section lists stations recorded more than 50mm total rainfall in the last 7 days. This is shown in Table 1 below.

Table 1:

Station	Total weekly Rainfall
Meru Met	197.6mm
Marsabit Met	163.1mm
Mandera Met	83.3mm
Kakamega Met	69.7mm
Moyale Met	66.9mm
Wajir Met	56.9mm
Mtwapa Met	52.7mm
Kisii Met	51.0mm

1.2 High Temperatures

This section lists stations that recorded average temperatures exceeding 35°C in the last 7 days. This is shown in Table 2 below.

Table 2:

Station	Average weekly maximum temperature
Garissa Met	36.4°C
Lodwar Met	35.6°C

1.3 Low Temperatures

This section lists stations that recorded average temperatures below 10°C in the last 7 days. This is shown in Table 3 below.

Table 3:

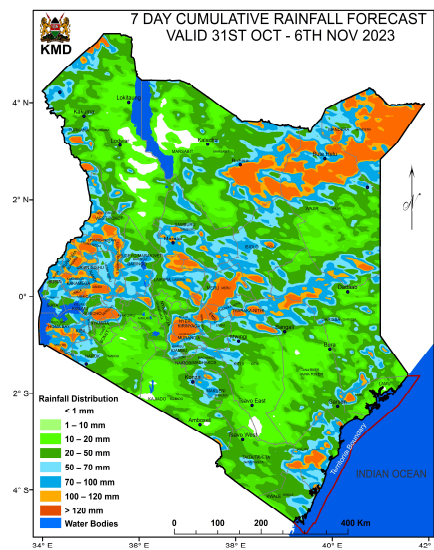
Station	Average weekly minimum temperature
Nyahururu Met	6.7°C

1.4 High Winds

This section list stations that recorded winds with speeds of more than 25 knots (12.9 metres per sec) in the last 7 days. This was recorded in Marsabit, Voi and Wajir met stations.

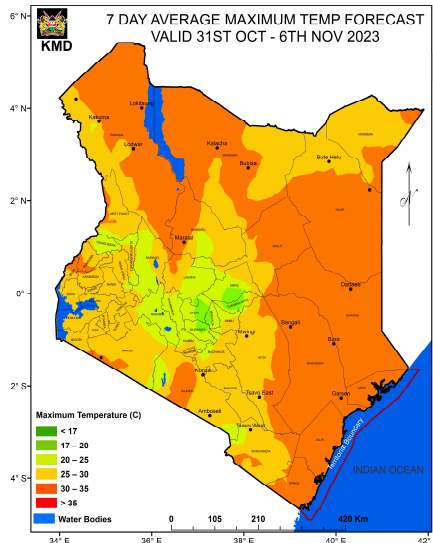
2.0 FORECAST FOR 31ST OCTOBER- 6TH NOVEMBER, 2023

a) Rainfall



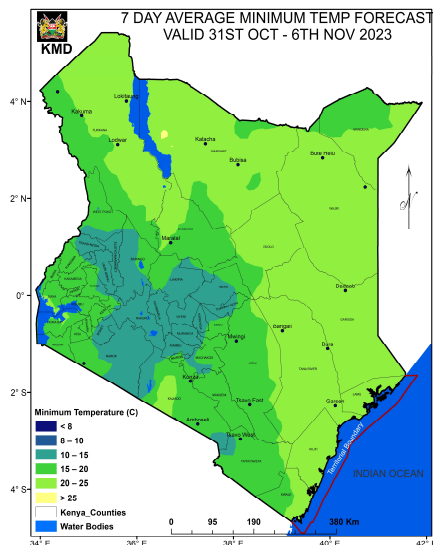
Rainfall exceeding 50mm is expected over parts of Meru, Muranga, Marsabit, Wajir, Kilifi (Mtwapa and Malindi), Mandera, Kericho, Migori, Vihiga, Kisumu, Kakamega, Tharaka nithi, Kirinyaga, Nyeri, Elgeyo Marakwet, Bungoma, Nandi, Uasin gishu (Eldoret), Trans nzoia (Kitale), West pokot and Kisii counties (Tuesday 31st October, 2023 to Monday 6th November, 2023)

b) High Temperature



Maximum Temperatures not exceeding 35°C is expected over parts of the Country during the forecast period (Tuesday 31st October 2023 to Monday 6th November, 2023).

c) Low Temperature



Minimum temperature of less than 10°C is expected over parts of Nyandarua (Nyahururu) and Nakuru Counties during the forecast period (Tuesday 31st October, 2023 to Monday 6th November, 2023).

d) Winds

Winds of more than 25 knots (12.9m/s) are expected over parts of Eldoret and Marsabit Counties, during the forecast period (Tuesday 31st October, 2023 to Monday 6th November, 2023). **Less risk of dust related diseases since we are in the rainy season in most parts of the Country.**

3.0 Advisories

i) Areas expected to receive more than 50 mm of weekly total rainfall have a high likelihood of occurrence of waterborne diseases (e.g. diarrhea) and Vector borne diseases (e.g. Malaria), especially in areas with poor drainage. Residents are advised to be on the lookout for such diseases and take necessary action.

ii) Residents living in areas expected to experience temperatures of more than 35°C have a high risk of being infected with skin diseases e.g. skin rash.

iii) Areas expected to experience less than 10°C have a high likelihood of occurrence of cold weather diseases. e.g. Asthma, pneumonia, common cold and flu. Residents are advised to be on the lookout for such diseases and take necessary action.

iv) Winds of more than 25 knots (12.9m/s). These winds are strong enough and able to blow dust especially over bare grounds. The blown dust may increase the risk of respiratory infections e.g. Cold and flu diseases. These diseases are quite common during the dry weather conditions. Residents are advised to be on the lookout for such diseases and take necessary protective measures.

N. B: This forecast is to be used together with the daily (24-hour) forecast issued by this Department.

Kennedy Thiong'o

FOR: DIRECTOR OF KENYA METEOROLOGICAL DEPARTMENT