



**REPUBLIC OF KENYA**  
**MINISTRY OF ENVIRONMENT AND FORESTRY**  
**KENYA METEOROLOGICAL DEPARTMENT**

*Dagoretti Corner, Ngong Road, P. O. Box 30259, 00100 GPO, Nairobi, Kenya*  
**Telephone:** 254 (0) 20 3867880-7, **Fax:** 254 (0) 20 3876955/3877373/3867888,  
**E-mail:** [director@meteo.go.ke](mailto:director@meteo.go.ke), [info@meteo.go.ke](mailto:info@meteo.go.ke); **Website:** <http://www.meteo.go.ke>  
**Biometeorological Services Division**

---

**WEEKLY BIOMETEOROLOGICAL BULLETIN (7<sup>TH</sup> FEBRUARY -13<sup>TH</sup> FEBRUARY 2023)**

*Ref No: KMD/MM/01-2023*

*Issue Date: 06/02/2023*

### **1.0 PREAMBLE**

Biometeorology is an interdisciplinary science of interactions between atmospheric processes and living organisms - plants, animals and human-beings. The Biometeorological Services Division collects, analyzes and interprets Meteorological and Health data in liaison with partners in the Health Sector for advisory development.

The weather information provided is aimed at guiding residents to identify and recognize the likelihood of occurrence of weather related health diseases according to the issued advisories and take necessary action.

Kenyan health authorities continue to report elevated cholera activity with an additional 1,409 suspected cases reported nationwide from Dec. 5-18, bringing the total case count to 2,959 Oct. 8-Dec. 18, 2022. This includes at least 105 laboratory-confirmed cases. Most cases have been reported in Garissa County (654 suspected cases), followed by Nairobi (384 suspected cases), Machakos (231 suspected cases), and Kiambu (164 suspected cases) counties. At least 55 cholera-associated deaths have been reported as of Dec. 5. This represents the most complete data available as of Jan. 10.

**Advisory:** Practice strict food and water precautions. Seek immediate medical attention if symptoms develop within a week of being in areas of high cholera transmission.

### **REVIEW FOR LAST WEEK (30<sup>TH</sup> JANUARY -5<sup>TH</sup> FEBRUARY, 2023)**

#### **1.1 High Rainfall**

This section lists stations recorded more than 50mm total rainfall in the last 7 days. All stations recorded total weekly rainfall less than 50mm.

#### **1.2 High Temperatures**

This section lists stations that recorded average temperatures exceeding 35°C in the last 7 days. This is shown in Table 1 below.

**Table 1:**

<b>Station</b>	<b>Average weekly maximum temperature</b>
Lodwar Met	38.0°C
Mandera Met	37.0°C

Garissa Met	36.2°C
-------------	--------

### 1.3 Low Temperatures

This section lists stations that recorded average temperatures below 10°C in the last 7 days. This is shown in Table 2 below.

**Table 2:**

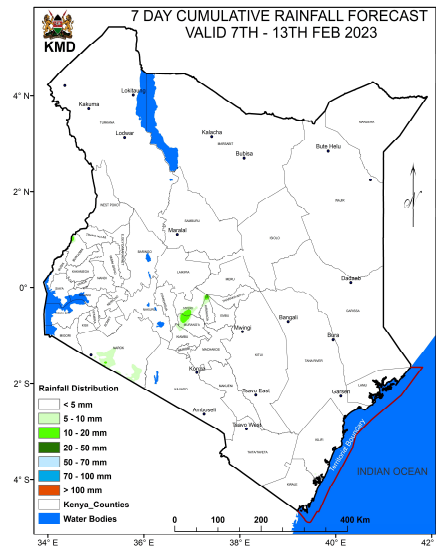
Station	Average weekly minimum temperature
Nyahururu Met	4.9°C
Eldoret A/Port	7.6°C
Kericho Met	8.4°C
Kabarak Met	8.8°C
Eldoret Met	8.9°C
Narok Met	9.0°C
Laikipia Met	9.5°C

### 1.4 High Winds

This section list stations that recorded winds with speeds of more than 25 knots (12.9 metres per sec) in the last 7 days. This was recorded in Marsabit met stations.

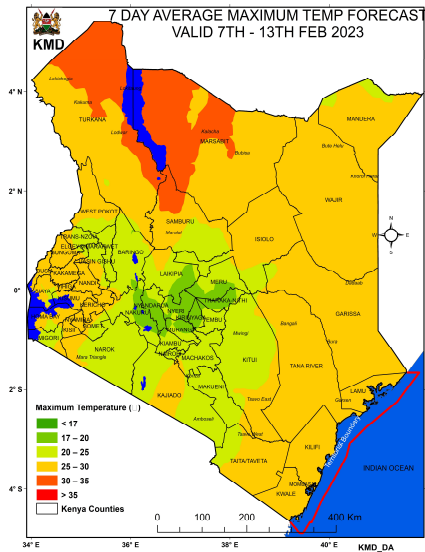
## 2.0 FORECAST FOR 7<sup>TH</sup> FEBRUARY -13<sup>TH</sup> FEBRUARY, 2023

### a) Rainfall



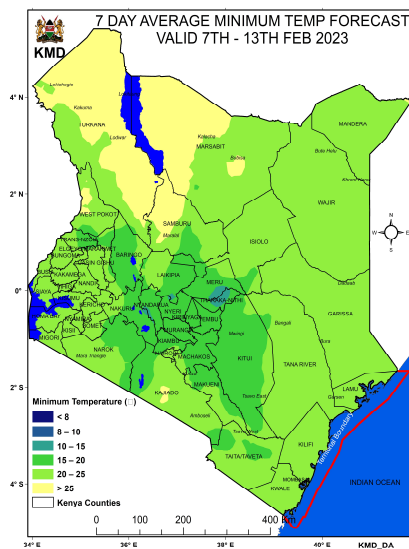
Rainfall less than 50mm is expected over parts of the Country (Tuesday 7<sup>th</sup> February, 2023 to Monday 13<sup>th</sup> February, 2023)

## b) High Temperature



Maximum Temperatures of more than 35°C are expected over parts of Turkana, Mandera and Garissa Counties during the forecast period (Tuesday 7<sup>th</sup> February, 2023 to Monday 13<sup>th</sup> February, 2023).

## c) Low Temperature



Minimum temperature of less than 10°C is expected over parts of Nyandarua County, during the forecast period (Tuesday 7<sup>th</sup> February, 2023 to Monday 13<sup>th</sup> February, 2023).

## d) Winds

Winds of more than 25 knots (12.9m/s) are expected over parts of Marsabit, Mandera, Lamu, Nairobi, Kajiado, Eldoret, Machakos, Nyahururu, Mombasa, Mtwapa, Msabaha, Malindi, Wajir and Turkana Counties, during the forecast period (Tuesday 7<sup>th</sup> February, 2023 to Monday 13<sup>th</sup> February, 2023)

## 3.0 Advisories

**i) Areas expected to receive more than 50 mm of weekly total rainfall have a high likelihood of occurrence of waterborne diseases (e.g. diarrhea) and Vector borne diseases (e.g. Malaria), especially in areas with poor drainage. Residents are advised to be on the lookout for such diseases and take necessary action.**

**ii) Residents living in areas expected to experience temperatures of more than 35°C** have a high risk of being infected with skin diseases e.g. skin rash.

**iii) Areas expected to experience less than 10°C** have a high likelihood of occurrence of cold weather diseases. e.g. Asthma, pneumonia, common cold and flu. Residents are advised to be on the lookout for such diseases and take necessary action.

**iv) Winds of more than 25 knots (12.9m/s).** These winds are strong enough and able to blow dust especially over bare grounds. The blown dust may increase the risk of respiratory infections e.g. Cold and flu diseases. These diseases are quite common during the dry weather conditions. Residents are advised to be on the lookout for such diseases and take necessary protective measures.

**N. B: This forecast is to be used together with the daily (24-hour) forecast issued by this Department.**

Dr Gikungu

**DIRECTOR OF KENYA METEOROLOGICAL DEPARTMENT**