



REPUBLIC OF KENYA

**MINISTRY OF ENVIRONMENT, CLIMATE CHANGE AND FORESTRY
KENYA METEOROLOGICAL DEPARTMENT**

Dagoretti Corner, Ngong Road, P. O. Box 30259, 00100 GPO, Nairobi, Kenya
Telephone: 254 (0) 20 3867880-7, **Fax:** 254 (0) 20 3876955/3877373/3867888,
E-mail: director@meteo.go.ke, info@meteo.go.ke; **Website:** <http://www.meteo.go.ke>
Biometeorological Services Division

WEEKLY BIOMETEOROLOGICAL BULLETIN (16TH JANUARY–22ND JANUARY 2024)

Ref No: KMD/MM/01-2024

Issue Date: 15/01/2024

1.0 PREAMBLE

Biometeorology is an interdisciplinary science of interactions between atmospheric processes and living organisms - plants, animals and human-beings. The Biometeorological Services Division collects, analyzes and interprets Meteorological and Health data in liaison with partners in the Health Sector for advisory development.

The weather information provided is aimed at guiding residents to identify and recognize the likelihood of occurrence of weather-related health diseases according to the issued advisories and take necessary action.

REVIEW FOR LAST WEEK (8TH JANUARY 2024– 14TH JANUARY 2024)

1.1 High Rainfall

This section lists stations recorded more than 50mm total rainfall in the last 7 days. This is shown in Table 1 below.

Table 1:

Station	Total weekly Rainfall
Kisumu Met	148.1mm
Wilson A/port	146.0mm
Dagoretti C	99.5mm
M.A. B	99.5mm
Kabete Met	88.1mm
Kangema Met	80.3mm
Ngong Met	71.0mm
Nyahururu Met	59.5mm
Kakamega Met	50.8mm

1.2 High Temperatures

This section lists stations that recorded average temperatures exceeding 35°C in the last 7 days. This is shown in Table 2 below.

Table 2:

Station	Average weekly maximum temperature
Lodwar Met	37.1°C
Garissa Met	36.1°C

1.3 Low Temperatures

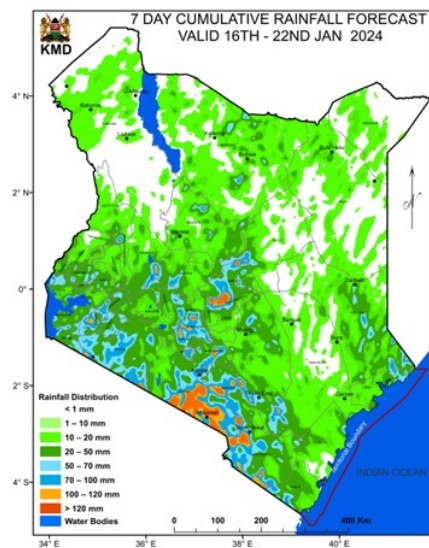
This section lists stations that recorded average temperatures below 10°C in the last 7 days. All stations recorded average temperatures exceeding 10°C in the last 7 days.

1.4 High Winds

This section list stations that recorded winds with speeds of more than 25 knots (12.9 metres per sec) in the last 7 days. This was recorded in Marsabit met station.

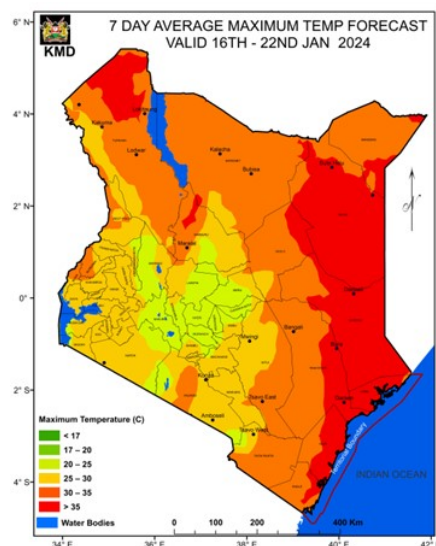
2.0 FORECAST FOR 16TH JANUARY 2024– 22ND JANUARY 2024

a) Rainfall



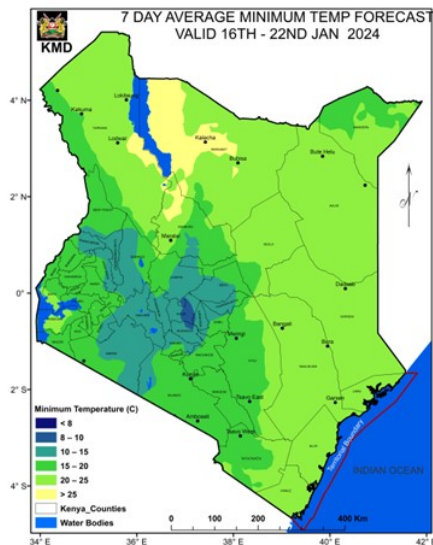
Rainfall exceeding 50mm is expected over parts of Narok, Kajiado, Kitui, Taita taveta, Kisii, Kakamega, Kericho, Nyamira and Machakos counties during the forecast period (Tuesday 16th January 2024 to Monday 22nd January 2024).

b) High Temperature



Maximum Temperatures exceeding 35°C is expected over parts of Turkana (Lodwar), Garissa, Wajir, Lamu, Kilifi, Kwale and Mandera Counties during the forecast period (Tuesday 16th January 2024 to Monday 22nd January 2024).

c) Low Temperature



Minimum temperature of less than 10°C is expected over parts of Nyandarua (Nyahururu), Kirinyaga, Nyeri, Nakuru, and Murang'a Counties during the forecast period (Tuesday 16th January 2024 to Monday 22nd January 2024).

c) Winds

Winds of more than 25 knots (12.9m/s) are expected over parts of Marsabit, Malindi, Mombasa, Mandera and Lamu Counties during the forecast period (Tuesday 16th January 2024 to Monday 22nd January 2024).

3.0 Advisories

i) Areas expected to receive more than 50 mm of weekly total rainfall have a high likelihood of occurrence of waterborne diseases (e.g. diarrhea) and Vector borne diseases (e.g. Malaria), especially in areas with poor drainage. Residents are advised to be on the lookout for such diseases and take necessary action.

ii) Residents living in areas expected to experience temperatures of more than 35°C have a high risk of being infected with skin diseases e.g. skin rash.

iii) Areas expected to experience less than 10°C have a high likelihood of occurrence of cold weather diseases. e.g. Asthma, pneumonia, common cold and flu. Residents are advised to be on the lookout for such diseases and take necessary action.

iv) Winds of more than 25 knots (12.9m/s). These winds are strong enough and able to blow dust especially over bare grounds. The blown dust may increase the risk of respiratory infections e.g. Cold and flu diseases. These diseases are quite common during the dry weather conditions. Residents are advised to be on the lookout for such diseases and take necessary protective measures.

N. B: This forecast is to be used together with the daily (24-hour) forecast issued by this Department.

Mary Githinji

FOR DIRECTOR OF KENYA METEOROLOGICAL DEPARTMENT